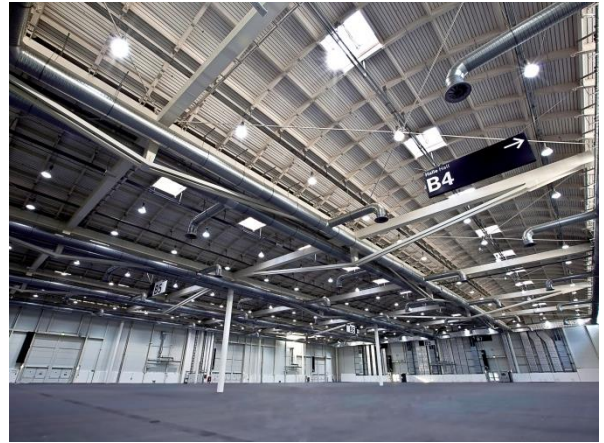


Hall B5



Dimensions

- Area 8,474 sqm
- Length 100 m; width 75 m
- Clear ceiling height 11,2 m

Technical Data

- Floor weight loading : 5,000 kg/sqm
- Max. no. of persons * 9,800
- Hall doorway dimensions (10 doors):
5,9 x 5,9 m – 9,9 x 10 m
- Ground level

Facilities

- 4 meeting rooms on 1st floor with view into hall
- Coffee bar “Cafetiero” in hall for max. 60 persons
- Daylight; can be completely or partially shaded on request
- Sanitary facilities in hall

* Depending on individual space allocation, escape route situation and type of event

[Virtual tour](#)