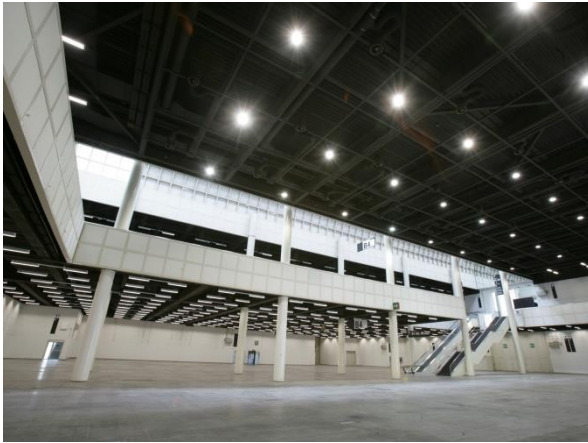


# Hall B4 ground floor



## Dimensions

- Area 3,758 sqm
- Length 54 m; width 44 m
- Clear ceiling height 5,8 – 13,5 m

## Technical Data

- Floor weight loading: 2,000 kg/sqm
- Max. no. of persons \* 2,800
- two-storey
- Ceiling partially open to Hall B4 upper floor
- Hall doorway dimensions (2 doors):  
5,9 x 5,65 m – 11,2 x 5,9 m

## Facilities

- Access through East Entrance
- Snack bar “PickUp” in hall for max. 15 persons
- Sanitary facilities in the hall
- 2 freight lifts, max. load 6,000 kg  
dimensions H 2,5 m x W 2,5 m x D 5,5 m

\* Depending on individual space allocation, escape route situation and type of event

[Virtual tour](#)

# Hall B4 upper floor



## Dimensions

- Area 2,357 sqm
- Length 54 m; width 44 m
- Clear ceiling height 5,9 m

## Technical Data

- Floor weight loading : 750 kg/sqm
- Max. no. of persons \* 1,800
- two-storey

## Facilities

- Access through East Entrance
- Snack bar "PickUp" in hall for max. 15 persons
- Sanitary facilities in the hall
- 2 freight lifts, max. load 6,000 kg  
dimensions H 2,5 m x W 2,5 m x D 5,5 m

\* Depending on individual space allocation, escape route situation and type of event

[Virtual tour](#)