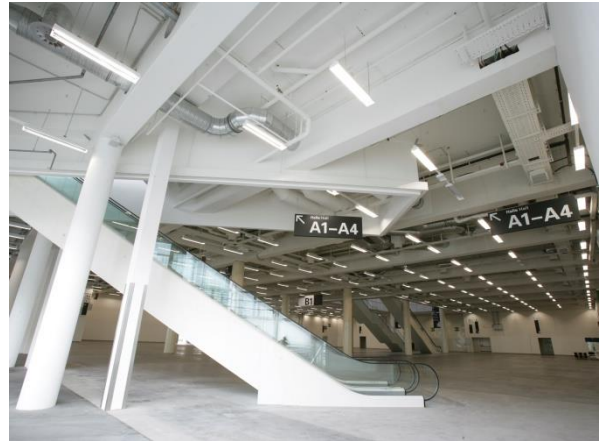
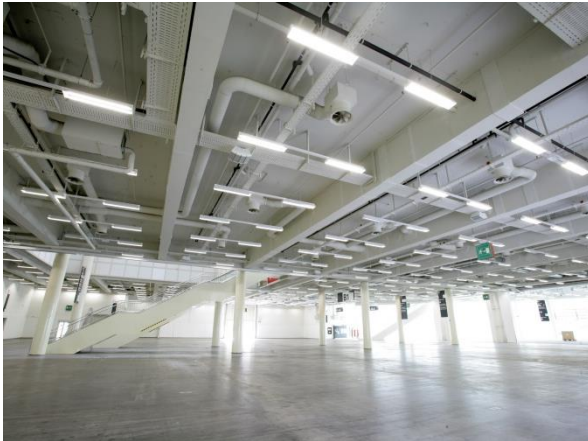


# Hall B1 ground floor



## Dimensions

- Area 3,517 sqm
- Length 54 m; width 44 m
- Clear ceiling height 5,5 m in addition to building, 5,9 m in the rest of the hall. Restrictions because of smoke barriers, max. design height in this area: 2,5 m

## Technical Data

- Floor weight loading : 2,000 kg/sqm
- Max. no. of persons \* 3,800
- two-storey
- Ceiling partially open to Hall B1 Upper Floor
- Hall doorway dimensions (2 doors): 5,2 x 5,9 m – 11,2 x 5,9 m

\* Depending on individual space allocation, escape route situation and type of event

## Facilities

- Sanitary facilities in the hall
- 3 freight lifts, max. load 6,000 kg
- Glass front Karolinenstraße, can be partially shaded via blinds
- Glass Elevator connects ground floor with upper floor

[Virtual tour](#)